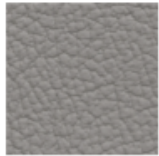


# LEATHER CATALOG

## LEATHER DESCRIPTIONS



### BATICK LEATHER

A corrected leather with a uniform pattern and many of its natural marks removed. Batick is resistant to fading, but changes will occur over time due to use and light exposure. The price and durability makes it a good choice for most homes.



### CORI LEATHER

Noticeably thicker with a larger pebbled grain effect than Batick, this grade is corrected with a uniform pattern, so most of its natural marks are removed. This creates a robust leather with many excellent properties including durability and easier cleaning.



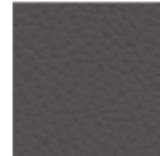
### PALOMA LEATHER

Slightly corrected, a combination of dyes and pigments smooth down some of this leather's pattern, although some minor grain and color nuances may vary. Marks, scars and insect bites are part of Paloma's look.



### NOBLESSE LEATHER

Our most exclusive leather is a full-grain semi-aniline, dyed using a light surface treatment. With the natural softness and characteristic glow of a first-class leather, Noblesse keeps its original grain, meaning minor color variations, marks and scars may be visible.



### PIONEER LEATHER

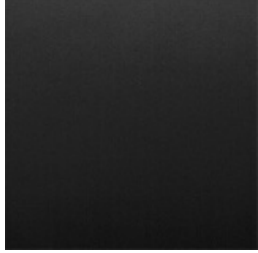
Full-bodied leather with good tear resistance and a delicate aniline pull-up finishing. The natural quality of this leather gives it medium-low resistance for color fastness to light and rubbing, and a natural appeal that becomes more beautiful with age.



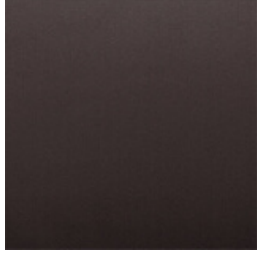
THE INNOVATORS OF COMFORT™

LEATHER CATALOG

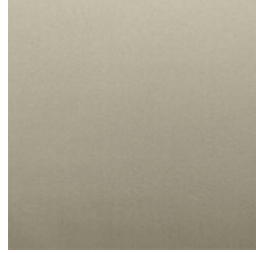
# PALOMA SPECIAL



**BLACK**



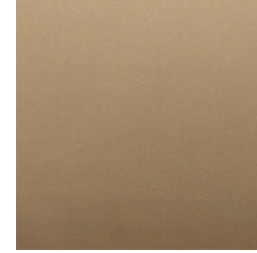
**CHOCOLATE**



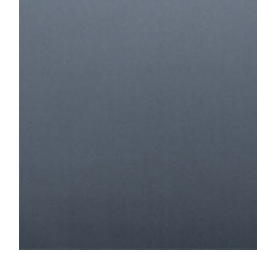
**LIGHT GREY**



**SILVER GREY**



**SAND**



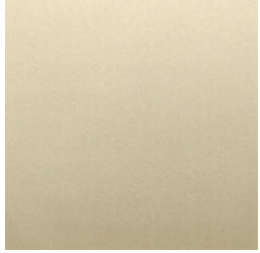
**SPARROW BLUE**



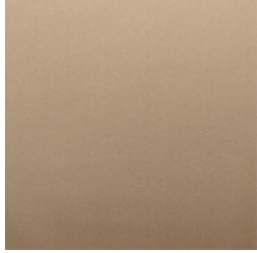
THE INNOVATORS OF COMFORT™

LEATHER CATALOG

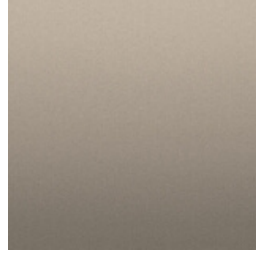
# PALOMA



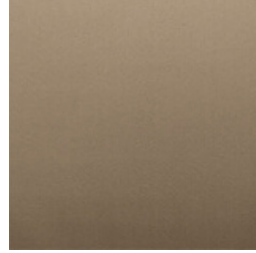
VANILLA



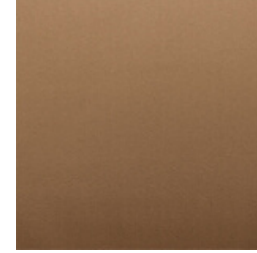
BEIGE



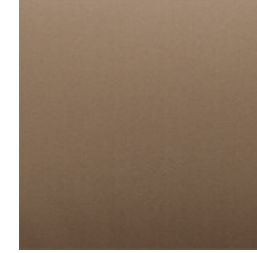
FOG



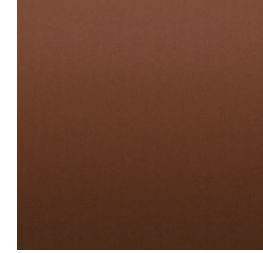
FUNGHI



TAUPE



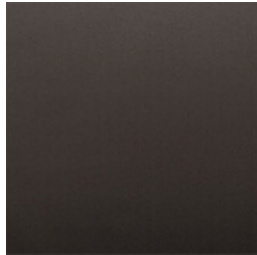
ALMOND



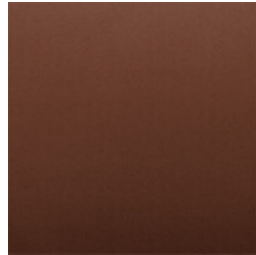
COGNAC



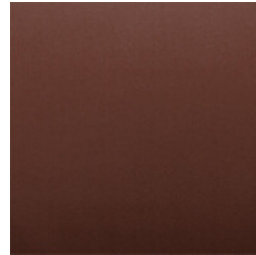
CHERRY



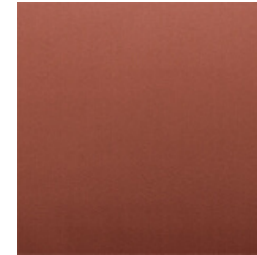
CHESTNUT



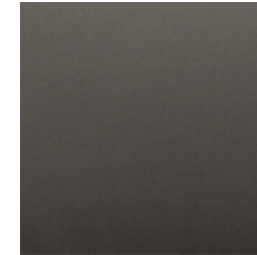
COPPER



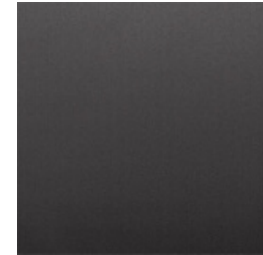
MAROON



HENNA



METAL GREY



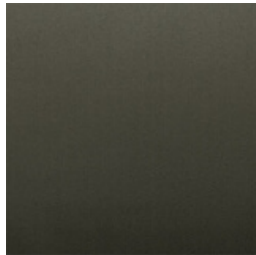
ROCK



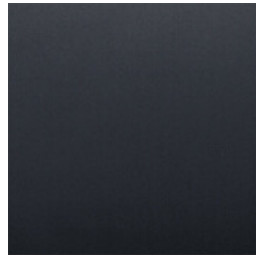
DARK GREEN



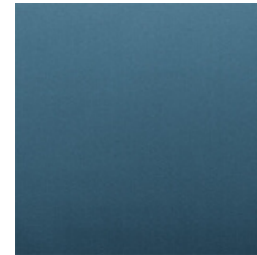
AQUA GREEN



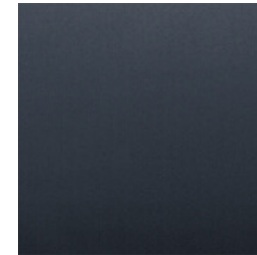
DARK OLIVE



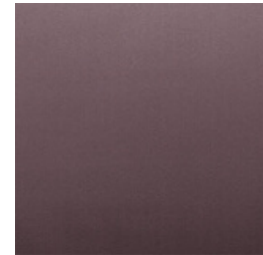
SHADOW BLUE



CRYSTAL BLUE



OXFORD BLUE



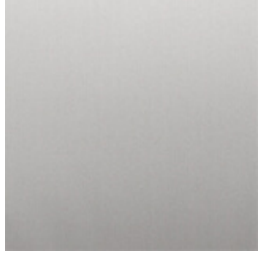
PURPLE PLUM



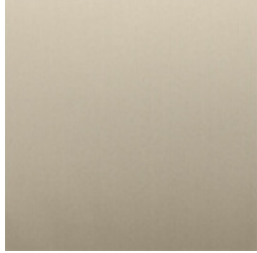
THE INNOVATORS OF COMFORT™

LEATHER CATALOG

# BATICK



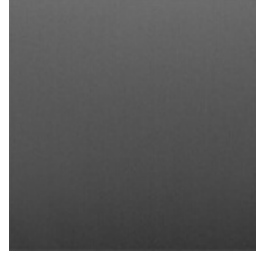
**SNOW**



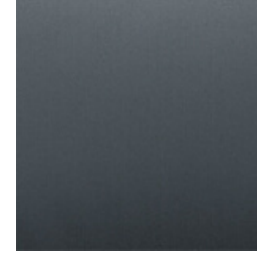
**CREAM**



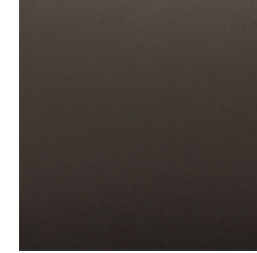
**WHITE DOVE**



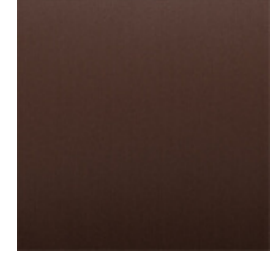
**GREY**



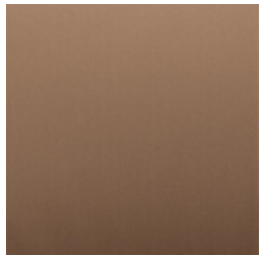
**ATLATIC BLUE**



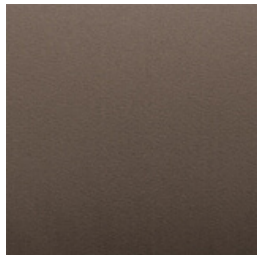
**BROWN**



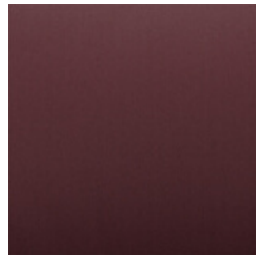
**MALT BROWN**



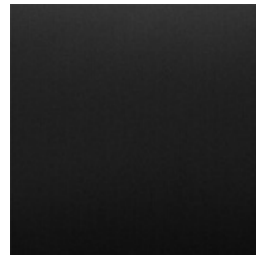
**LATTE**



**MOLE**



**BORDEAUX**



**BLACK**



THE INNOVATORS OF COMFORT™

LEATHER CATALOG

**CORI**



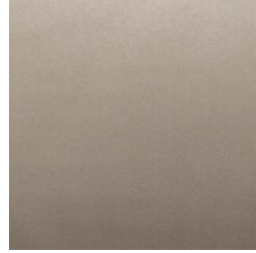
**OFF WHITE**



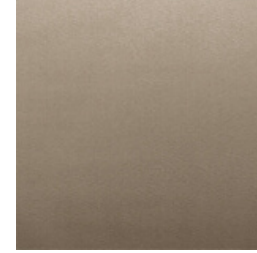
**SILVER CLOUD**



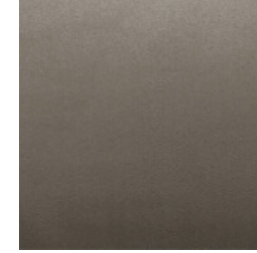
**VANILLA**



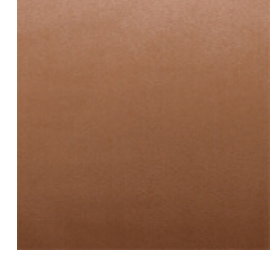
**BEIGE**



**FOG**



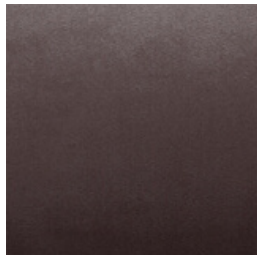
**MOLE**



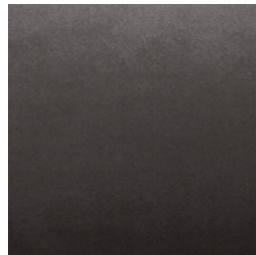
**TAN**



**BRICK RED**



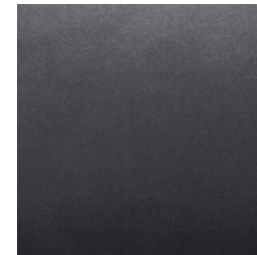
**ARAMONE**



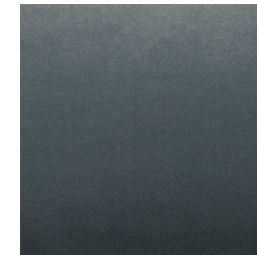
**BROWN**



**BLACK**



**BLUE**

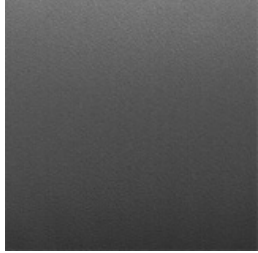


**PETROL**

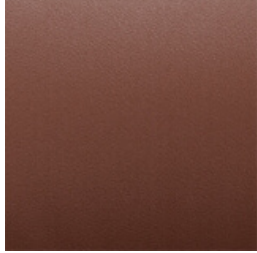


THE INNOVATORS OF COMFORT™

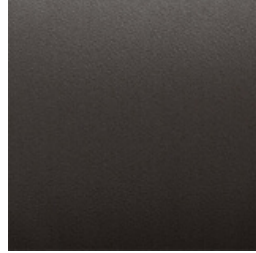
LEATHER CATALOG  
**NOBLESE**



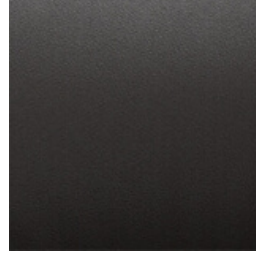
**GREY**



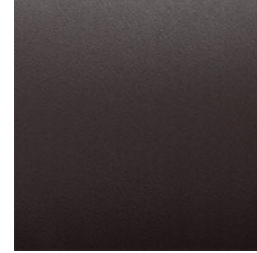
**TIGEREYE**



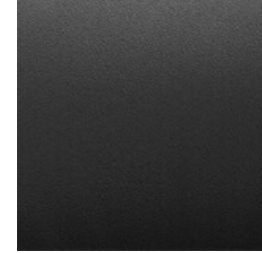
**BROWN**



**DARK BROWN**



**AMARONE**



**BLACK**

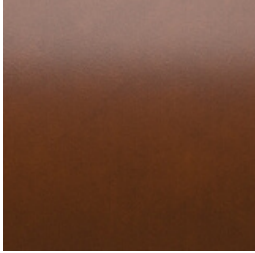


THE INNOVATORS OF COMFORT™

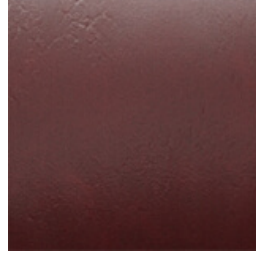
LEATHER CATALOG  
**PIONEER**



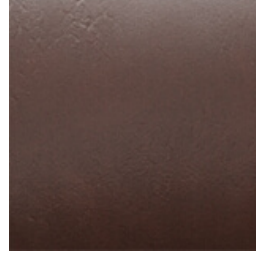
**OLIVE BROWN**



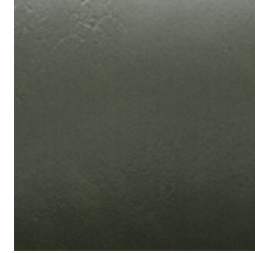
**COGNAC**



**RED**



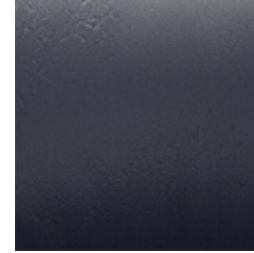
**DARK BROWN**



**GREEN**



**GREY**



**BLUE**



**BLACK**